

NOTES :

- UNLESS OTHERWISE STATED ALL CONSTRUCTION ACTIVITIES SHALL BE OF PRACTICE, CORRESPONDING TO RELEVANT (MUNICIPAL) STANDARD CODES OF PRACTICE.
- ALL DIMENSIONS ARE IN MILLIMETERS & LEVELS ARE IN METERS. DIMENSIONS AND LEVELS SHALL BE SHOWN IN ALL DRAWINGS AND BE FOLLOWED. ALL LEVELS GIVEN IN STRUCTURAL DRAWINGS ARE IN STRUCTURAL LEVEL UNLESS OTHERWISE INDICATED.
- ANY DISCREPANCY IN THE STRUCTURAL AND ARCHITECTURAL DRAWINGS SHALL BE RECORDED AND REPORTED TO THE ARCHITECTURAL CONSULTANT BEFORE EXECUTION OF WORK.
- UNLESS OTHERWISE SPECIFIED ALL REINFORCEMENT TO BE USED SHALL BE OF GRADE 460 BARS OF 12mm TO 30mm CONFORMING TO SLS-1786-2008.
- UNLESS OTHERWISE STATED LAP LENGTH OF BARS SHALL BE AS FOLLOWS:

- AS FOLLOWS:
- BEAMS : 40d
- SLABS : 20mm

- GRADE OF CONCRETE FOR SUPERSTRUCTURE UP TO AND INCLUDING 4TH FLOOR WILL BE OF M40 & ABOVE THAT FLOOR WILL BE OF M25 AS PER SLS-68:2000.
- CONCRETE SHALL BE CASTED IN LAYERS OF 150mm TO 200mm.
- DEVELOPMENT LENGTH 500D FOR LAP & SPLICES SHOULD BE MAINTAINED UNLESS OTHERWISE INDICATED.
- WHENEVER A SUPPORTED MEMBER TERMINATES AT A SUPPORTING MEMBER THE BARS OF THE SUPPORTED MEMBER SHOULD HAVE AN ANCHOR LENGTH OF 500D.
- WHEN TWO BEAMS MEET AT A COLUMN LOCATION, ALL THE BARS OF BOTH BEAMS SHOULD BE CONTINUED THROUGH THE COLUMN.
- ALL CANTILEVER SLAB WITHOUT PERIPHERAL BEAMS THE TOP REINFORCEMENT SHALL BE CONTINUED THROUGH THE COLUMN.
- ALL CANTILEVER SLAB WITH PERIPHERAL BEAMS THE TOP REINFORCEMENT SHALL BE CONTINUED THROUGH THE COLUMN.

TITLE

STRUCTURAL DRAWING OF PROPOSED 4TH, 5TH & 6TH FLOOR OVER EXISTING 1ST, 2ND, 3RD & 4TH FLOOR OF THE BUILDING. THE BUILDING IS A 6-STOREY BUILDING WITH A TOTAL HEIGHT OF 24.00 METERS. THE BUILDING IS TO BE CONSTRUCTED IN ACCORDANCE WITH THE REQUIREMENTS OF THE NATIONAL BUILDING REGULATIONS, 2009. THE BUILDING IS TO BE CONSTRUCTED IN ACCORDANCE WITH THE REQUIREMENTS OF THE NATIONAL BUILDING REGULATIONS, 2009.

SIGNATURE OF OWNER

Signature of Owner: *[Signature]*
 Name: *[Name]*
 Designation: *[Designation]*

SIGNATURE OF ARCHITECT

Signature of Architect: *[Signature]*
 Name: *[Name]*
 Designation: *[Designation]*

SIGNATURE OF GEO-TECHNICAL ENGINEER

Signature of Geo-Technical Engineer: *[Signature]*
 Name: *[Name]*
 Designation: *[Designation]*

SIGNATURE OF STRUCTURAL ENGINEER

Signature of Structural Engineer: *[Signature]*
 Name: *[Name]*
 Designation: *[Designation]*

SIGNATURE OF THE VETTING AUTHORITY

Signature of the Vetting Authority: *[Signature]*
 Name: *[Name]*
 Designation: *[Designation]*

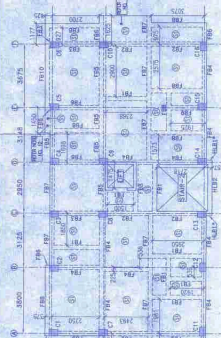
DRAWING TITLE

STRUCTURAL DRAWING OF PROPOSED 4TH, 5TH & 6TH FLOOR OVER EXISTING 1ST, 2ND, 3RD & 4TH FLOOR OF THE BUILDING.

SCALE: 1:100 (OR AS SHOWN)

SHEET NO. - 2 OF 2

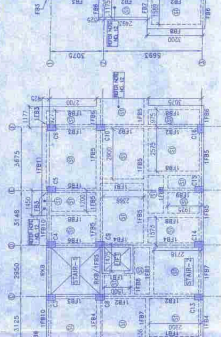
SHEET SIZE - A0



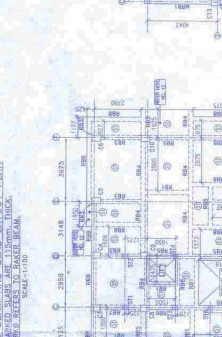
TYPICAL FLOOR BEAM AND SLAB LAYOUT PLAN FOR 1ST FLOOR. SCALE: 1:100



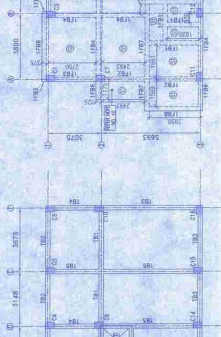
TYPICAL SECTION OF SLAB. SCALE: 1:10



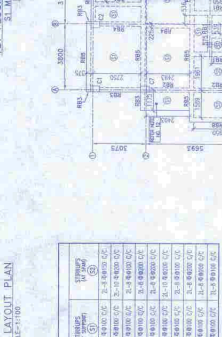
TYPICAL SECTION OF BEAM. SCALE: 1:10



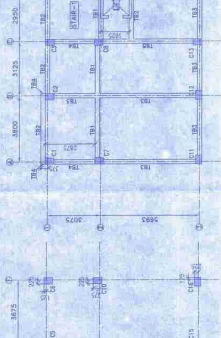
TYPICAL SECTION OF COLUMN. SCALE: 1:10



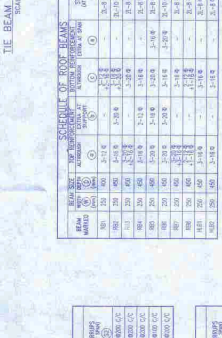
TYPICAL SECTION OF WATER TANK. SCALE: 1:10



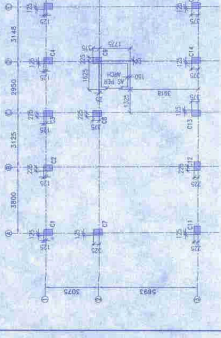
TYPICAL SECTION OF MUMMY BEAM. SCALE: 1:10



TYPICAL SECTION OF LMR FLOOR BEAM. SCALE: 1:10



TYPICAL SECTION OF LMR ROOF BEAM. SCALE: 1:10



TYPICAL SECTION OF CORBEL BEAM. SCALE: 1:10



TYPICAL DUCTILE DETAIL OF BEAM COLUMN JUNCTION. SCALE: 1:10

1ST FLOOR BEAM AND SLAB LAYOUT PLAN. SCALE: 1:100

2ND FLOOR BEAM AND SLAB LAYOUT PLAN. SCALE: 1:100

3RD FLOOR BEAM AND SLAB LAYOUT PLAN. SCALE: 1:100

4TH FLOOR BEAM AND SLAB LAYOUT PLAN. SCALE: 1:100

5TH FLOOR BEAM AND SLAB LAYOUT PLAN. SCALE: 1:100

6TH FLOOR BEAM AND SLAB LAYOUT PLAN. SCALE: 1:100

SCHEDULE OF BEAMS

Beam No.	Span	Reinforcement	Remarks
101	3.00m	As: 2-12, As: 2-12	1st Floor
102	3.00m	As: 2-12, As: 2-12	1st Floor
103	3.00m	As: 2-12, As: 2-12	1st Floor
104	3.00m	As: 2-12, As: 2-12	1st Floor
105	3.00m	As: 2-12, As: 2-12	1st Floor
106	3.00m	As: 2-12, As: 2-12	1st Floor
107	3.00m	As: 2-12, As: 2-12	1st Floor
108	3.00m	As: 2-12, As: 2-12	1st Floor
109	3.00m	As: 2-12, As: 2-12	1st Floor
110	3.00m	As: 2-12, As: 2-12	1st Floor
111	3.00m	As: 2-12, As: 2-12	1st Floor
112	3.00m	As: 2-12, As: 2-12	1st Floor
113	3.00m	As: 2-12, As: 2-12	1st Floor
114	3.00m	As: 2-12, As: 2-12	1st Floor
115	3.00m	As: 2-12, As: 2-12	1st Floor
116	3.00m	As: 2-12, As: 2-12	1st Floor
117	3.00m	As: 2-12, As: 2-12	1st Floor
118	3.00m	As: 2-12, As: 2-12	1st Floor
119	3.00m	As: 2-12, As: 2-12	1st Floor
120	3.00m	As: 2-12, As: 2-12	1st Floor

SCHEDULE OF BEAMS

Beam No.	Span	Reinforcement	Remarks
201	3.00m	As: 2-12, As: 2-12	2nd Floor
202	3.00m	As: 2-12, As: 2-12	2nd Floor
203	3.00m	As: 2-12, As: 2-12	2nd Floor
204	3.00m	As: 2-12, As: 2-12	2nd Floor
205	3.00m	As: 2-12, As: 2-12	2nd Floor
206	3.00m	As: 2-12, As: 2-12	2nd Floor
207	3.00m	As: 2-12, As: 2-12	2nd Floor
208	3.00m	As: 2-12, As: 2-12	2nd Floor
209	3.00m	As: 2-12, As: 2-12	2nd Floor
210	3.00m	As: 2-12, As: 2-12	2nd Floor
211	3.00m	As: 2-12, As: 2-12	2nd Floor
212	3.00m	As: 2-12, As: 2-12	2nd Floor
213	3.00m	As: 2-12, As: 2-12	2nd Floor
214	3.00m	As: 2-12, As: 2-12	2nd Floor
215	3.00m	As: 2-12, As: 2-12	2nd Floor
216	3.00m	As: 2-12, As: 2-12	2nd Floor
217	3.00m	As: 2-12, As: 2-12	2nd Floor
218	3.00m	As: 2-12, As: 2-12	2nd Floor
219	3.00m	As: 2-12, As: 2-12	2nd Floor
220	3.00m	As: 2-12, As: 2-12	2nd Floor

SCHEDULE OF BEAMS

Beam No.	Span	Reinforcement	Remarks
301	3.00m	As: 2-12, As: 2-12	3rd Floor
302	3.00m	As: 2-12, As: 2-12	3rd Floor
303	3.00m	As: 2-12, As: 2-12	3rd Floor
304	3.00m	As: 2-12, As: 2-12	3rd Floor
305	3.00m	As: 2-12, As: 2-12	3rd Floor
306	3.00m	As: 2-12, As: 2-12	3rd Floor
307	3.00m	As: 2-12, As: 2-12	3rd Floor
308	3.00m	As: 2-12, As: 2-12	3rd Floor
309	3.00m	As: 2-12, As: 2-12	3rd Floor
310	3.00m	As: 2-12, As: 2-12	3rd Floor
311	3.00m	As: 2-12, As: 2-12	3rd Floor
312	3.00m	As: 2-12, As: 2-12	3rd Floor
313	3.00m	As: 2-12, As: 2-12	3rd Floor
314	3.00m	As: 2-12, As: 2-12	3rd Floor
315	3.00m	As: 2-12, As: 2-12	3rd Floor
316	3.00m	As: 2-12, As: 2-12	3rd Floor
317	3.00m	As: 2-12, As: 2-12	3rd Floor
318	3.00m	As: 2-12, As: 2-12	3rd Floor
319	3.00m	As: 2-12, As: 2-12	3rd Floor
320	3.00m	As: 2-12, As: 2-12	3rd Floor

SCHEDULE OF BEAMS

Beam No.	Span	Reinforcement	Remarks
401	3.00m	As: 2-12, As: 2-12	4th Floor
402	3.00m	As: 2-12, As: 2-12	4th Floor
403	3.00m	As: 2-12, As: 2-12	4th Floor
404	3.00m	As: 2-12, As: 2-12	4th Floor
405	3.00m	As: 2-12, As: 2-12	4th Floor
406	3.00m	As: 2-12, As: 2-12	4th Floor
407	3.00m	As: 2-12, As: 2-12	4th Floor
408	3.00m	As: 2-12, As: 2-12	4th Floor
409	3.00m	As: 2-12, As: 2-12	4th Floor
410	3.00m	As: 2-12, As: 2-12	4th Floor
411	3.00m	As: 2-12, As: 2-12	4th Floor
412	3.00m	As: 2-12, As: 2-12	4th Floor
413	3.00m	As: 2-12, As: 2-12	4th Floor
414	3.00m	As: 2-12, As: 2-12	4th Floor
415	3.00m	As: 2-12, As: 2-12	4th Floor
416	3.00m	As: 2-12, As: 2-12	4th Floor
417	3.00m	As: 2-12, As: 2-12	4th Floor
418	3.00m	As: 2-12, As: 2-12	4th Floor
419	3.00m	As: 2-12, As: 2-12	4th Floor
420	3.00m	As: 2-12, As: 2-12	4th Floor

SCHEDULE OF BEAMS

Beam No.	Span	Reinforcement	Remarks
501	3.00m	As: 2-12, As: 2-12	5th Floor
502	3.00m	As: 2-12, As: 2-12	5th Floor
503	3.00m	As: 2-12, As: 2-12	5th Floor
504	3.00m	As: 2-12, As: 2-12	5th Floor
505	3.00m	As: 2-12, As: 2-12	5th Floor
506	3.00m	As: 2-12, As: 2-12	5th Floor
507	3.00m	As: 2-12, As: 2-12	5th Floor
508	3.00m	As: 2-12, As: 2-12	5th Floor
509	3.00m	As: 2-12, As: 2-12	5th Floor
510	3.00m	As: 2-12, As: 2-12	5th Floor
511	3.00m	As: 2-12, As: 2-12	5th Floor
512	3.00m	As: 2-12, As: 2-12	5th Floor
513	3.00m	As: 2-12, As: 2-12	5th Floor
514	3.00m	As: 2-12, As: 2-12	5th Floor
515	3.00m	As: 2-12, As: 2-12	5th Floor
516	3.00m	As: 2-12, As: 2-12	5th Floor
517	3.00m	As: 2-12, As: 2-12	5th Floor
518	3.00m	As: 2-12, As: 2-12	5th Floor
519	3.00m	As: 2-12, As: 2-12	5th Floor
520	3.00m	As: 2-12, As: 2-12	5th Floor

SCHEDULE OF BEAMS

Beam No.	Span	Reinforcement	Remarks
601	3.00m	As: 2-12, As: 2-12	6th Floor
602	3.00m	As: 2-12, As: 2-12	6th Floor
603	3.00m	As: 2-12, As: 2-12	6th Floor
604	3.00m	As: 2-12, As: 2-12	6th Floor
605	3.00m	As: 2-12, As: 2-12	6th Floor
606	3.00m	As: 2-12, As: 2-12	6th Floor
607	3.00m	As: 2-12, As: 2-12	6th Floor
608	3.00m	As: 2-12, As: 2-12	6th Floor
609	3.00m	As: 2-12, As: 2-12	6th Floor
610	3.00m	As: 2-12, As: 2-12	6th Floor
611	3.00m	As: 2-12, As: 2-12	6th Floor
612	3.00m	As: 2-12, As: 2-12	6th Floor
613	3.00m	As: 2-12, As: 2-12	6th Floor
614	3.00m	As: 2-12, As: 2-12	6th Floor
615	3.00m	As: 2-12, As: 2-12	6th Floor
616	3.00m	As: 2-12, As: 2-12	6th Floor
617	3.00m	As: 2-12, As: 2-12	6th Floor
618	3.00m	As: 2-12, As: 2-12	6th Floor
619	3.00m	As: 2-12, As: 2-12	6th Floor
620	3.00m	As: 2-12, As: 2-12	6th Floor

SCHEDULE OF COLUMNS

Column No.	Dimensions	Reinforcement	Remarks
101	300x300	As: 4-12, As: 4-12	1st Floor
102	300x300	As: 4-12, As: 4-12	1st Floor
103	300x300	As: 4-12, As: 4-12	1st Floor
104	300x300	As: 4-12, As: 4-12	1st Floor
105	300x300	As: 4-12, As: 4-12	1st Floor
106	300x300	As: 4-12, As: 4-12	1st Floor
107	300x300	As: 4-12, As: 4-12	1st Floor
108	300x300	As: 4-12, As: 4-12	1st Floor
109	300x300	As: 4-12, As: 4-12	1st Floor
110	300x300	As: 4-12, As: 4-12	1st Floor
111	300x300	As: 4-12, As: 4-12	1st Floor
112	300x300	As: 4-12, As: 4-12	1st Floor

PW100-14
PAGE 5 of 12

The number of the County and the number of the State are indicated in the upper right corner of the document.

Application of Shelby, Deborah L. for a General of Madison, Mississippi, under Section 205(a)(1) of the Mississippi Constitution, to be a Member of the Board of Supervisors for the Madison County for the 2014-2018 term.

Shelby, Deborah L.
Madison County
Madison, Mississippi



Shelby, Deborah L.
Madison County
Madison, Mississippi

Shelby, Deborah L.
Madison County
Madison, Mississippi

Shelby, Deborah L.
Madison County
Madison, Mississippi